

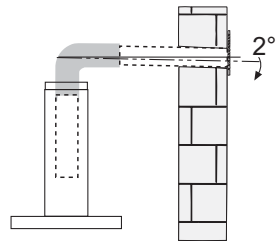
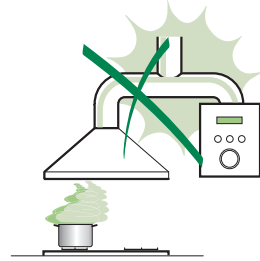
TITANO

RECOMMENDATIONS AND SUGGESTIONS

⚠ The Instructions for Use apply to several versions of this appliance. Accordingly, you may find descriptions of individual features that do not apply to your specific appliance.

INSTALLATION

- The manufacturer will not be held liable for any damages resulting from incorrect or improper installation.
- The minimum safety distance between the cooker top and the extractor hood is 650 mm (some models can be installed at a lower height, please refer to the paragraphs on working dimensions and installation).
- Check that the mains voltage corresponds to that indicated on the rating plate fixed to the inside of the hood.
- For Class I appliances, check that the domestic power supply guarantees adequate earthing. Connect the extractor to the exhaust flue through a pipe of minimum diameter 120 mm. The route of the flue must be as short as possible.
- Do not connect the extractor hood to exhaust ducts carrying combustion fumes (boilers, fireplaces, etc.).
- If the extractor is used in conjunction with non-electrical appliances (e.g. gas burning appliances), a sufficient degree of aeration must be guaranteed in the room in order to prevent the backflow of exhaust gas. The kitchen must have an opening communicating directly with the open air in order to guarantee the entry of clean air. When the cooker hood is used in conjunction with appliances supplied with energy other than electric, the negative pressure in the room must not exceed 0,04 mbar to prevent fumes being drawn back into the room by the cooker hood.
- In the event of damage to the power cable, it must be replaced by the manufacturer or by the technical service department, in order to prevent any risks.
- If the instructions for installation for the gas hob specify a greater distance specified above, this has to be taken into account. Regulations concerning the discharge of air have to be fulfilled.

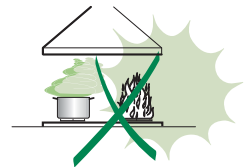



USE

- The extractor hood has been designed exclusively for domestic use to eliminate kitchen smells.
- Never use the hood for purposes other than for which it has been designed.
- Never leave high naked flames under the hood when it is in operation.
- Adjust the flame intensity to direct it onto the bottom of the pan only, making sure that it does not engulf the sides.
- Deep fat fryers must be continuously monitored during use: overheated oil can burst into flames.
- Do not flambé under the range hood; risk of fire
- This appliance is not intended for use by persons (including children) with reduced physical, sensory or mental capabilities, or lack of experience and knowledge, unless they have been given supervision or instruction concerning use of the appliance by a person responsible for their safety.
- Children should be supervised to ensure that they do not play with the appliance.
- "CAUTION: Accessible parts may become hot when used with cooking appliances."

MAINTENANCE

- Switch off or unplug the appliance from the mains supply before carrying out any maintenance work.
- Clean and/or replace the Filters after the specified time period (Fire hazard).
- Clean the hood using a damp cloth and a neutral liquid detergent.



The symbol  on the product or on its packaging indicates that this product may not be treated as household waste. Instead it shall be handed over to the applicable collection point for the recycling of electrical and electronic equipment. By ensuring this product is disposed of correctly, you will help prevent potential negative consequences for the environment and human health, which could otherwise be caused by inappropriate waste handling of this product. For more detailed information about recycling of this product, please contact your local city office, your household waste disposal service or the shop where you purchased the product.

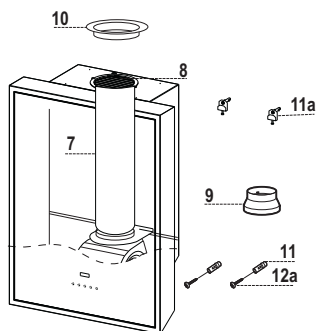
CHARACTERISTICS

Components

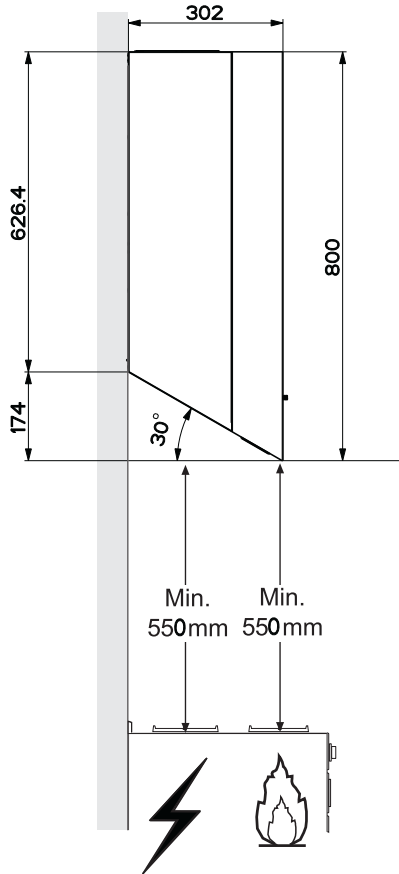
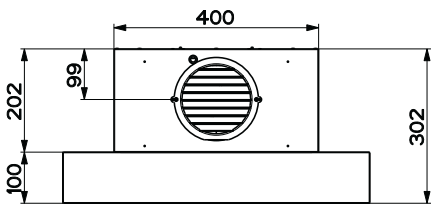
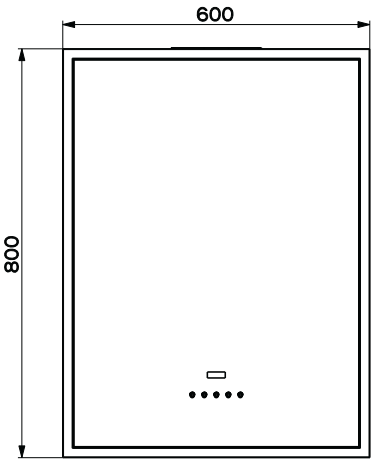
Ref.	Q.ty	Product components
1	1	Hood Body complete with: Controls, Light, Suction Unit, Filters, Lower Duct
7	1	PVC Pipe (fitted)
8	1	Inclinable grid (fitted)
9	1	Reduction flange \varnothing 150-120 mm
10	1	Metal cover

Ref.	Q.ty	Assembly components
11	2	Wall Plugs
11a	2	SB 12/10 Plugs
12a	2	Screws 4,2 x 44,4

Q.ty	Documents
1	Instruction Manual



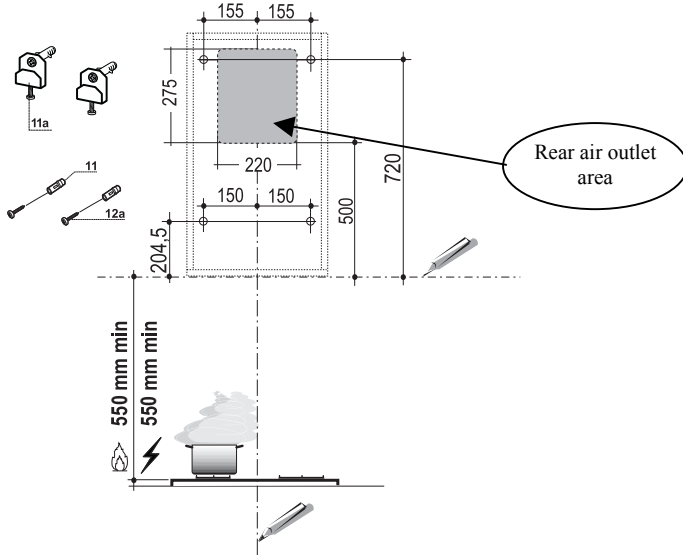
Dimensions



INSTALLATION

Drilling the Wall

If the hood is to be connected in the ducting version, with the pipe coming out of the back, remember that the air venting duct must be created as indicated in the drawing.



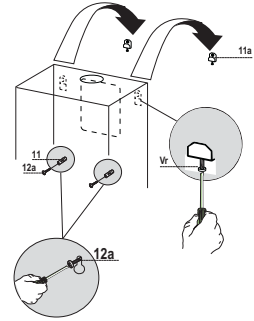
If the hood is fitted in the recirculation version, bear in mind that there must be a minimum distance of at least 8-10 Cm left between the top of the hood and the surface above it (ceiling or shelf).

Draw the following on the Wall:

- a Vertical line up to the ceiling or top surface, at the centre of the area in which the Hood is to be fitted;
- a Horizontal line: 550 mm min. above the Hob;
- As shown in the drawing, mark a reference point 720 mm above the reference horizontal line, and at a distance of 155 mm to the right of the vertical reference line.
- Repeat this operation on the other side, checking to ensure it is level.
- Drill the points marked using a \varnothing 12 mm drill bit.
- Insert the wall plugs with screw and bracket **11a** into the holes, tighten.
- As shown in the drawing, mark a reference point 196.5 mm above the reference horizontal line, and at a distance of 165 mm to the right of the vertical reference line.
- Repeat this operation on the other side, checking to ensure it is level.
- Drill the points marked using a \varnothing 8 mm drill bit.
- Insert the plugs **11** into the holes.

Mounting the hood body

- Remove the metal grease filters by turning the handles provided.
- Adjust the two screws **Vr**, on brackets **11a**, to a minimum.
- Hook the hood canopy onto the two brackets **11a**.
- From inside the hood canopy, adjust the screws **Vr** to set the Hood Canopy level.
- Tighten the safety screws **12a**.



Connection

AIR OUTLET IN A DUCTING HOOD VERSION

When installing the hood in ducting version, basing on the installer's choice, a rigid or a flexible pipe with a \varnothing 150 or 120 mm is used in order to connect the hood to the air outlet piping. The pipe connection can be made on the upper part or on the rear side of the hood.

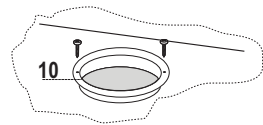
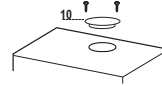
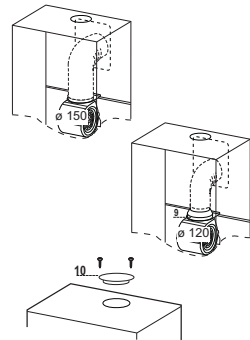
Before connecting the hood to the air outlet ducting remove the lateral air outlet grid **8** and the plastic tube **7**. The adapting flange **9** has to be removed only in case the connecting diameter is 150.

REAR AIR OUTLET

- When drilling the air outlet hole in the wall proceed in accordance with the scheme in the part concerning the wall drilling.
- Use a pair of tongs when breaking the rear air outlet hole in the wall.
- In case the connection is made by using a \varnothing 120 mm pipe insert the reduction flange **9** on the hood body outlet.
- Fix the pipe with an adequate quantity of pipe clamps. This material is not supplied together with the hood.
- Remove the charcoal filter if present.
- Fix the metal cover **10** to the upper air outlet hole of the hood by using the screws supplied.

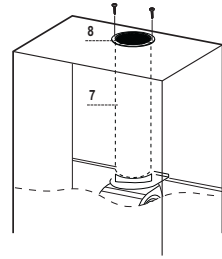
UPPER AIR OUTLET

- In case the connection is made by using a \varnothing 120 mm pipe insert the reduction flange **9** on the hood body outlet.
- Use a pair of tongs when removing the central part of the metal cover **10**. Fix the cover to the air outlet hole of the hood by using the screws supplied.
- Fix the pipe with an adequate quantity of pipe clamps. This material is not supplied together with the hood.
- Remove the charcoal filter if present.



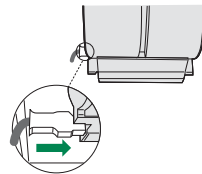
AIR OUTLET IN A RECYCLING HOOD VERSION

- In case the components requested for the recycling functioning have been removed earlier these have to be positioned again.
- Put the plastic tube onto the flange 7.
- Place the air outlet grid 8 on the air outlet. Make sure that the position of the grid is correct.
- Make sure that charcoal filters have been placed inside the hood.



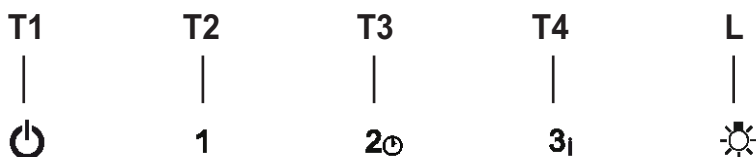
ELECTRICAL CONNECTION

- Connect the hood to the mains through a two-pole switch having a contact gap of at least 3 mm.
- Remove the grease filters (see paragraph Maintenance) being sure that the connector of the feeding cable is correctly inserted in the socket placed on the side of the fan.



USE

Control panel



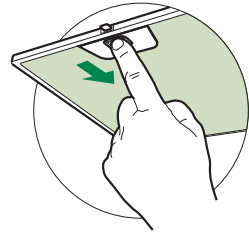
Button	Function	
T1	Turns the Motor off.	-
T2	Turns the motor on at speed one	Buttons T1+T2 are on.
T3	Turns the Motor on at speed two	Buttons T1+T3 are on.
	Press and hold for 2 seconds to enable shutdown with a 20 minute delay (Motor+Lights). It is possible to change the operating speed when this function is enabled.	The respective buttons T1+ (T2 or T3 or T4) will flash.
T4	Turns the Motor on at speed three	Buttons T1+T4 are on.
	Press and hold for 2 seconds to activate Intensive speed, which is timed to run for 10 minutes. At the end of this time it will automatically return to the speed set before. Suitable to deal with maximum levels of cooking fumes.	The button flashes.
L	Turns the Lighting System on and off at maximum intensity.	Button on

MAINTENANCE

Grease filters

CLEANING METAL SELF- SUPPORTING GREASE FILTERS

- The filters must be cleaned every 2 months of operation, or more frequently for particularly heavy usage, and can be washed in a dishwasher.
- Remove the filters one at a time by pushing them towards the back of the group and pulling down at the same time.
- Wash the filters, taking care not to bend them. Allow them to dry before refitting.
- When refitting the filters, make sure that the handle is visible on the outside.

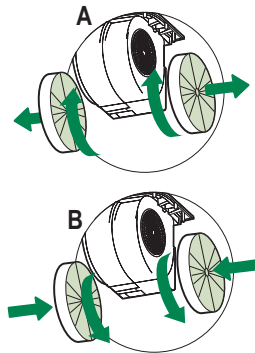


Activated charcoal filter (Recirculation version)

These filters are not washable and cannot be regenerated, and must be replaced approximately every 4 months of operation, or more frequently with heavy usage.

REPLACING THE ACTIVATED CHARCOAL FILTER

- Remove the metal grease filters
- Remove the saturated activated charcoal filter as shown (A).
- Fit the new filters (B).
- Replace the metal grease filters.



Lighting unit

Warning: This appliance is fitted with a white LED lamp classed as 1M according to EN 60825-1: 1994 + A1:2002 + A2:2001 standards; maximum optical power emitted @439nm: 7μW. Do not look directly at the light through optical devices (binoculars, magnifying glasses...).

- For replacement contact technical support. ("To purchase contact technical support")